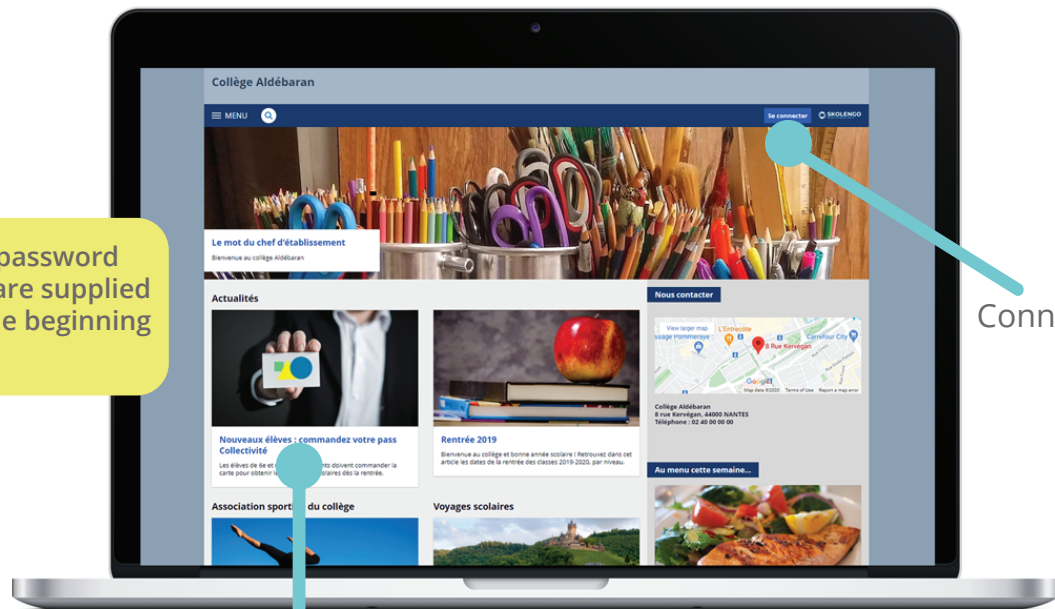


FIRST STEPS ON THE EDUCATION MANAGEMENT SOFTWARE

PARENTS
LEGAL GUARDIANS



Connecting for the first time

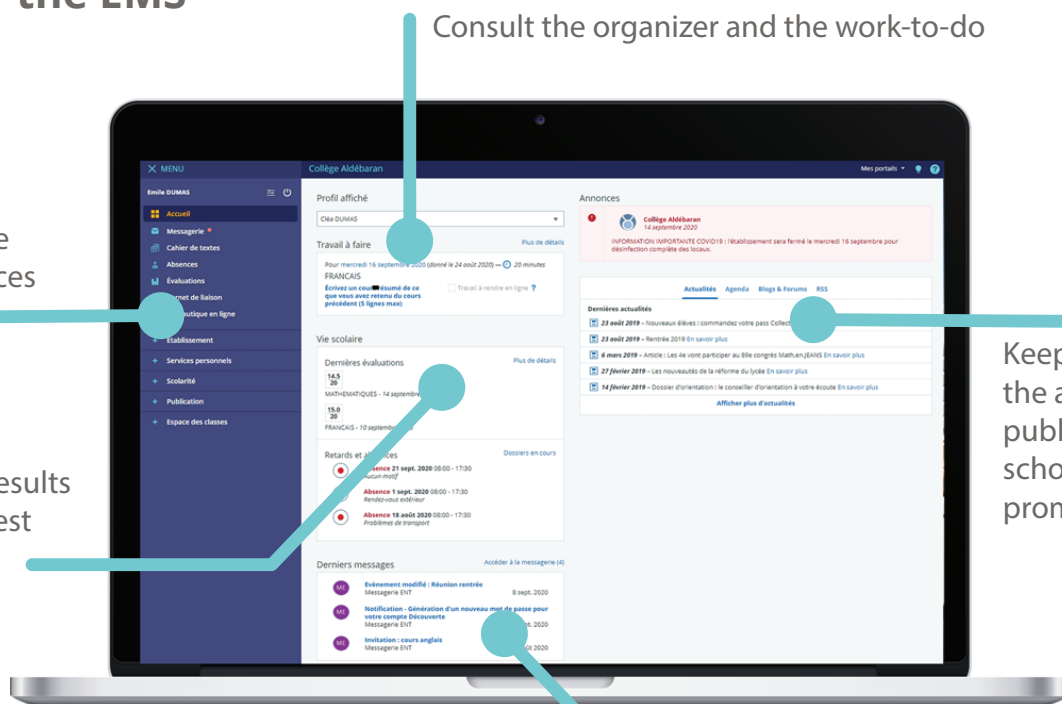


The username and password for the connection are supplied by your school at the beginning of the school year

Connect here

Consult the latest school news on the home page

Discover the EMS



Browse through the different EMS services

Consult the organizer and the work-to-do

Consult the latest results and your child's latest absences*

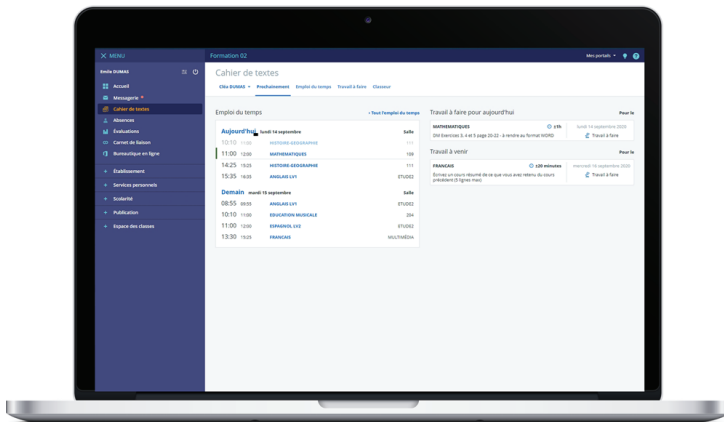
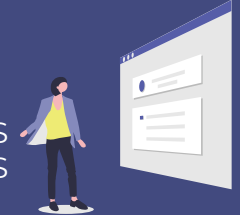
Keep informed of the announcements published by the school and project promoters

Consult your messages and exchange with the teachers

* On condition of the compatibility of the schooling solution of the school with the EMS

FIRST STEPS ON THE EDUCATION MANAGEMENT SOFTWARE

PARENTS
LEGAL GUARDIANS



Consult the organiser

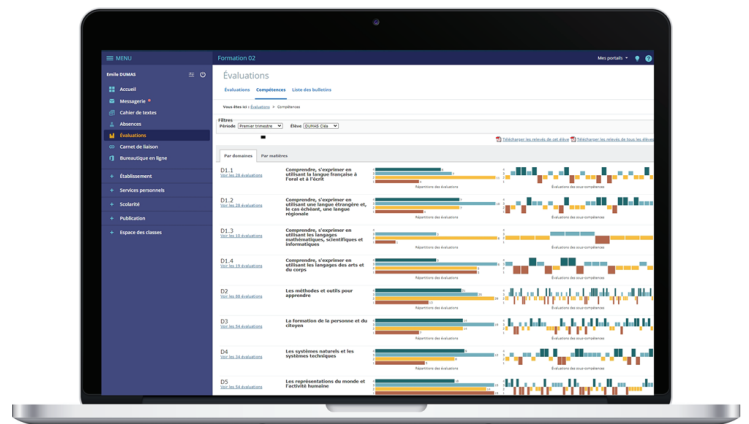
Consult your child's **organiser** and the daily work to do

Timetable changes can be seen directly on the EMS.

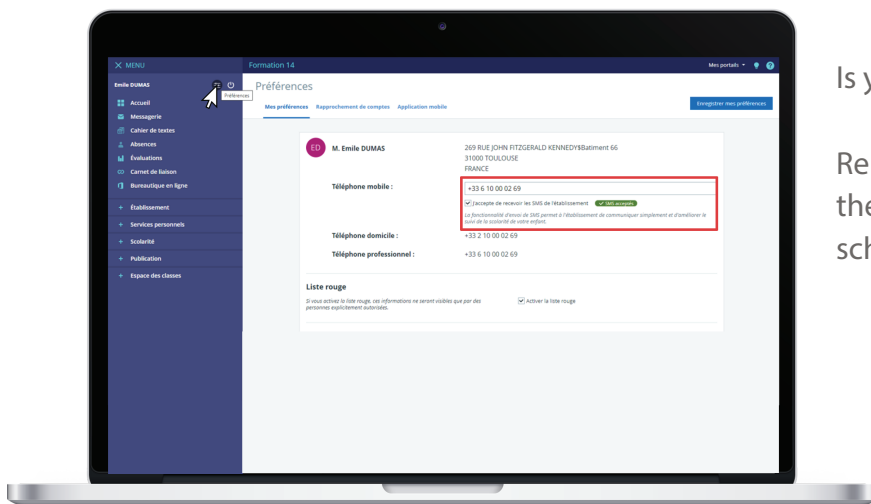
View marks and absences

With the **Evaluations** module, you can view your child's marks from day to day as well as their assessment reviews and reports

With the **Absences** module, discover the summary of all your child's latenesses and absences



Don't forget to update your contact preferences



Is your child ill? Is the teacher absent?

Remember to **update your contact details** in the EMS to be kept informed of the news from the school and events in the school life of your child.

Need help?

Check out the EMS user community site.

skolengo-academy.org

* On condition of the compatibility of the schooling solution of the school with the EMS